

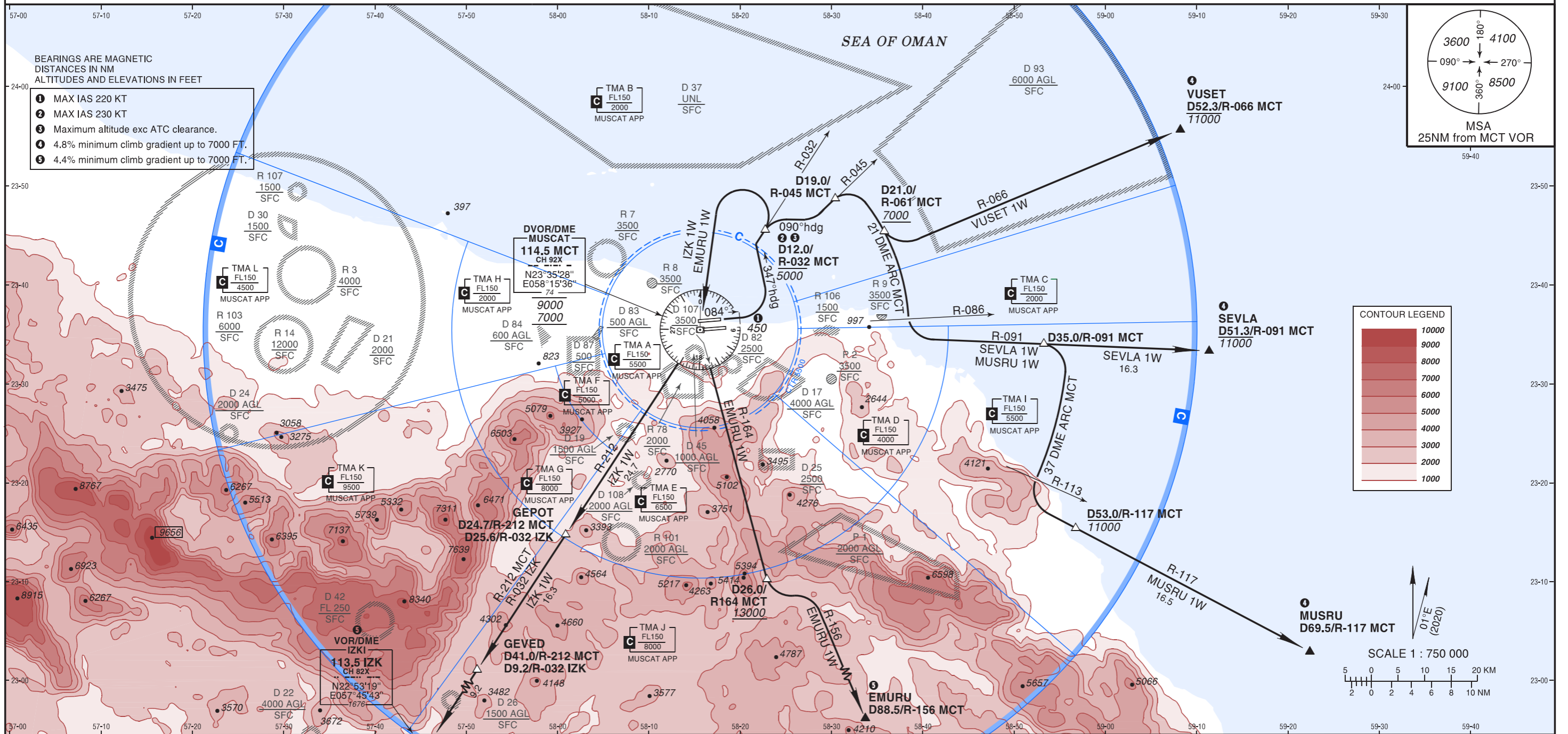
STANDARD DEPARTURE CHART INSTRUMENT (SID) - ICAO

STANDARD DEPARTURE CHART INSTRUMENT (SID) - ICAO
AD ELEV 49 FT
Trans Alt 13000
Trans Level FL150

ATIS 126.800
TWR 118.825
GND 121.800

MUSCAT/Muscat Intl
OMAN
RWY 08L

VUSET 1W, SEVLA 1W, MUSRU 1W, EMURU 1W, IZK 1W DEPARTURE



INITIAL CLIMB

Climb on runway heading to reach 450. Turn LEFT on heading 347° to intercept and follow R-032 MCT to D12.0 MCT at or below 5000 exc ATC clearance.

SID	ROUTING
VUSET 1W	Turn RIGHT on heading 090° to intercept and follow R-045 MCT to D19.0 MCT. Turn RIGHT to follow 21 DME ARC MCT to D21.0/R-061 MCT at or above 7000. Turn LEFT to follow R-066 MCT direct to VUSET at or below 11000.
SEVLA 1W	Turn RIGHT on heading 090° to intercept and follow R-045 MCT to D19.0 MCT. Turn RIGHT to follow 21 DME ARC MCT to R-086 MCT. Turn LEFT to follow R-091 MCT direct to SEVLA at or below 11000.
MUSRU 1W	Turn RIGHT on heading 090° to intercept and follow R-045 MCT to D19.0 MCT. Turn RIGHT to follow 21 DME ARC MCT to R-086 MCT at or above 7000 at R-061 MCT. Turn LEFT to follow R-091 MCT to D35.0 MCT. Turn RIGHT to follow 37 DME ARC MCT to R-113 MCT. Turn LEFT to intercept and follow R-117 MCT to D53.0 MCT at or below 11000 direct to MUSRU.
EMURU 1W	Turn LEFT direct to MCT DVOR/DME between 7000 and 9000. Follow R-164 MCT to D26.0 MCT at or above 13000. Turn LEFT to intercept and follow R-156 MCT direct to EMURU.
IZK 1W	Turn LEFT direct MCT DVOR/DME between 7000 and 9000. Follow R-212 MCT direct to GEPOT. Follow R-212 MCT (R-032 IZK) direct to GEVED. Follow R-212 MCT (R-032 IZK) direct IZK VOR/DME.